



CAGING SYSTEMS FOR ARBOREAL REPTILES AND AMPHIBIANS

WEBSITE: [HTTP://WWW.DRAGONSTRAND.COM](http://www.dragonstrand.com)
FACEBOOK: [HTTP://FACEBOOK.COM/DRAGONSTRAND](http://facebook.com/dragonstrand)
EMAIL: DRAGONSTRAND@GMAIL.COM

ASSEMBLY INSTRUCTIONS:

BREEDER SERIES CAGING



Medium Wide



Medium Tall



Large

Welcome to the Dragon Strand family of caging systems. Here you will find systems for all stages of the life of your dragon friend from hatchling to adult. You'll find rack compatible enclosures and stand-alone caging. You can choose from full screen for maximum ventilation to solid walls for retaining mist and humidity.

Your Breeder Series Cage is specifically designed for visual isolation and to allow your misting system to run without worry for ruining walls and furniture outside the cage. Although your Breeder Series Cage may be used in any location, it is specifically designed to fit standard 18" wire rack systems. Branch holders are included to give solid anchors for your cage interior.



Assembly Instructions: Breeder Series Cage



Getting Set-up

These assembly instructions are good for any of the Breeder Series Cages. Note that the Large Breeder Cage has one additional front panel which will get specific mention.

Unpacking: Carefully unpack the cage pieces and familiarize yourself with the pieces. Each piece has a label on it which identifies where it goes.



When unwrapping the pieces you will find two small bags. One holds screws and one holds small plastic clips. The screw bag contains many large screws and four small screws. The small screws are for attaching the door hinges. The plastic clips are your vine holders. Place the screws in a bowl for safe keeping.

Tools Needed:
Phillips Head Screwdriver
Scissors (to unwrap parts)

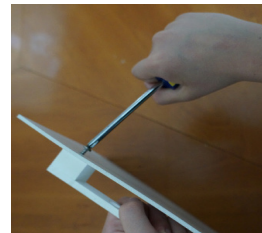


Step 1: Attach the Branch and Vine Holders

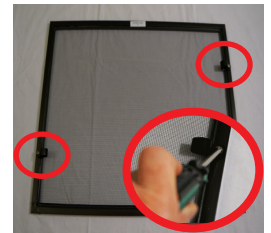
Branch Holders are attached using the long-type screws. Each side has two and the back panel has one.

Vine holders attach to the top panel and will provide a convenient anchor to loop artificial vines. Find the two pre-drilled holes on the top panel and attach the vine holders using the screws included in the vine holder bag.

Branch Holders



Vine Holders



Step 2: Construct the Cage Core

The cage core is the top, back, and bottom panels attached. Use the long screws to attach these panels together. Attach them laying horizontally on a table as shown. The core will not be independently stable yet.



- A) To attach the Top Panel, line up the screw holes on the top of the Back Panel and on the back of the Top Panel frame. The Top Panel attaches to the PVC side of the back panel with the vine holders on the cage inside.
- B) The Bottom Panel is attached in the same manner as the Top Panel. Attach with the groove side of the Bottom Panel facing down.

Step 3: Attach the Sides

The important part about attaching the sides is to make sure all the pre-drilled holes are properly lined up. The key to this is to find the one edge on both the side frame and the PVC sheet that has only one hole drilled (Two holes drilled for the Large Breeder cage). This hole is for the trap door and is placed at the front bottom. The PVC white wall is sandwiched between the side frame and the cage core you assembled in step 2.

HINT: Verify that holes line up before screwing the screws in. Although you can drill firm enough to create your own holes in the PVC white wall, the easiest way is to line up the correct screw holes in the frame and wall!

Hints to keep in mind when assembling walls:

-The white wall is sandwiched between the assembly and the side frame.



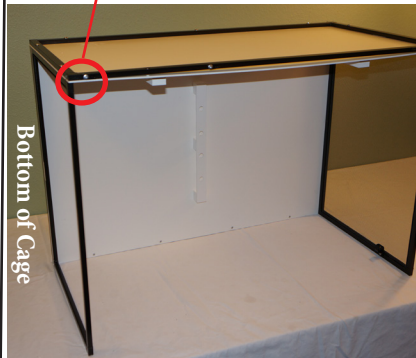
- The Side walls are flush with the back of the cage, but extend beyond the front. This is to provide a place for the doors.



Overhang

-Ensure the Branch Holders are on the opposite side of the aluminum side frame.

Trap Door screw hole



A) Add Left Side.
Align the Left Side Panel with a PVC wall and line up the pre-drilled holes on the left side of the cage core.



B) Add Right Side.
Repeat with Right Side Panel. Ensure that the hinge ends are not sandwiched between the frame and the PVC wall when placing them together.



Goal of Step 3

Step 4: Attach the Trap Door and Main Door

The trap door provides an easy way to spot clean the floor without disturbing the cage inhabitant. It swings up pivoting on two screws. The main door swings out. You should have four small screws remaining. These are for the hinges.



Two screws only

A) Trap Door
This piece is labeled "Face Panel Bottom". Lay it at the bottom of the open portion of the cage and align the pre-drilled holes on the sides. Attach from sides with two long screws.

For Large Breeder Cage Only

Your front panel is split into three sections: A top panel, door panel, and a trap door panel (which you have just installed). Place "Face Panel Top" at the top of the open portion of the cage and attach with four screws.



B) Main Door
Lay the main door in place and align the hinges with the holes in the door frame. Use the four short screws that remain.



Goal of Step 4



C) Bottom Panel
Slide the PVC floor panel into the bottom. Ensure it goes all the way to the back. **You have completed the cage assembly!**



CAGING SYSTEMS FOR ARBOREAL REPTILES AND AMPHIBIANS

**WEBSITE: [HTTP://WWW.DRAGONSTRAND.COM](http://www.dragonstrand.com)
FACEBOOK: [HTTP://FACEBOOK.COM/DRAGONSTRAND](http://facebook.com/dragonstrand)
EMAIL: DRAGONSTRAND@GMAIL.COM**