



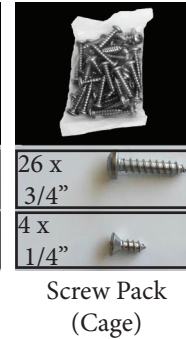
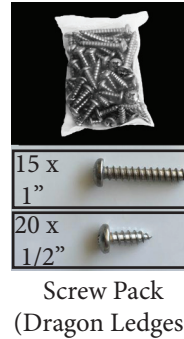
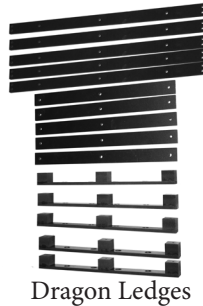
# Assembly Instructions: Large Keeper Cage Bundle

## Packing List :

Carefully unpack the box and find each item.

### Cage Panels:

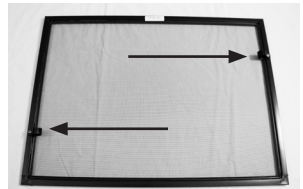
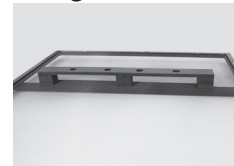
- (A) Back Panel
- (B) Right Panel (with hinges attached)
- (C) Bottom Frame
- (D) Left Panel (with latch tabs attached)
- (E) Top Panel
- (F) Plastic Floor Panels (You will have 2 of these)
- (G1) Upper Face Panel
- (G2) Service Door
- (H) Door



- Tools Needed for Assembly:** Phillips Head Screwdriver  
Scissors (to unwrap parts)  
Bowl (to hold screws)
- Caution 1: Do not over-tighten screws!** Tighten the screw until it is fully seated in the frame and stop turning when the screw is tight. Forcing the screw beyond this point will strip the hole.
- Caution 2:** Beware of slipping with the screwdriver and punching a hole in the screen. Tighten the screws firmly and deliberately, but do not rush yourself or press harder than necessary.
- Success Hint:** Open a screw bag only when it is required and store screws in a bowl.
- Assembly Note:** Except for the Bottom Frame, the panel side with the sticker is the inside of the cage.
- Assembly Note:** Rattling inside a cage frame is normal and can be ignored. This is the pop rivet end.

## Pre-Assembly: Attach Vine Holders, Dragon Ledges, and Misting Nozzle Hardware

- A) Install Dragon Ledges:** Please reference Dragon Ledge Install Instructions
- B) Misting Nozzle Hardware:** Misting nozzle mounting hardware must be purchased from the misting nozzle manufacturer. If you are using a misting system and are using a support wedge please install the hardware at this time. The wedge may cover one of the Vine Holder pre-drilled holes
- C) Attach Vine Holders:** These attach to the top panel and will provide a convenient anchor to loop artificial vines. Find the two pre-drilled holes on the Top Panel (E) and attach the vine holders using the screws included in the vine holder bag. If one of the pre-drilled holes is covered by a misting nozzle mounting wedge then you have to option of leaving that vine holder off or placing the vine holder in another location and firmly screwing it in place using the self-tapping screw.
- D) Remove Stickers:** If you desire to remove the frame stickers, carefully pry as much off as possible and use Goo Gone or WD-40 to rub off the adhesive.



1) Construct cage core with Back Panel (A), Top Panel (E), and Bottom Frame (C). Use 3/4" screws from cage screw bag. Bottom Frame sticker is on outside. Other panels are installed with stickers on inside.



2) Add Side Panels (B) and (D) with 3/4" screws. Stickers are on the inside top of the panel. Attach to Top Panel (E) first to avoid slipping and possible screen damage to Top Panel.



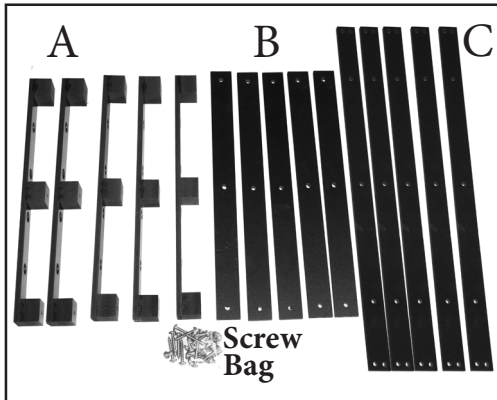
3) Complete Front by first installing the Service Door (G2) with two 3/4" screws from the sides. Then install the Upper Face Panel (G1). Finally, lay the door in and use four flathead 1/4" screws to attach to hinges.  
4) Slide in Floor Panel (F)

Your Large Keeper Screen Cage is complete!



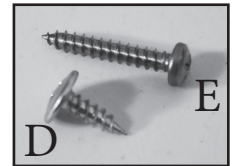
# Dragon Ledges Installation Instructions

**Introduction.** Your Dragon Ledges allow you to create an internal landscape for your screen cage. These solid anchors distribute weight to the frame instead of the screen. Using these ledges you are free to hang plants or create interior landscapes. An instructional video is available online at <http://www.youtube.com/watch?v=ZSEIJOUDI00>

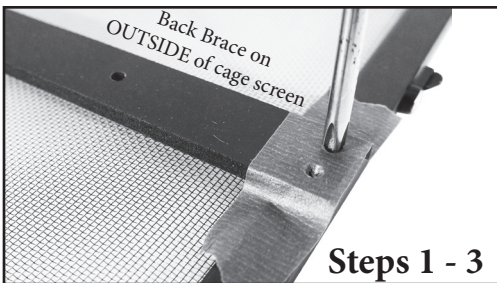


**Contents.** Each Large Keeper Bundle contains 5 horizontal Dragon Ledges for the sides and back.

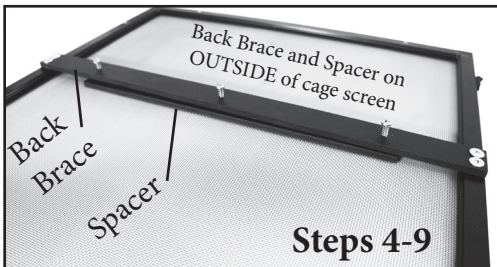
- Qty: 5 (A) Ledge
  - Qty: 5 (B) Spacer
  - Qty: 5 (C) Horizontal Back Brace
  - Qty: 20 (D) Short screw (1/2")
  - Qty: 15 (E) Long Screw (1")
- } Screw bag



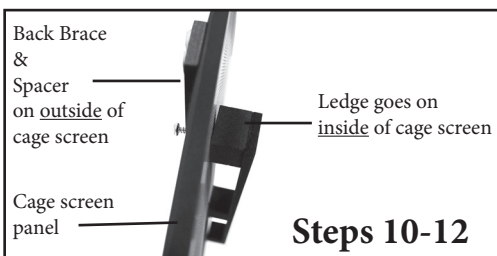
**Warning:** Care must be taken in all steps as slipping with a screw driver or any other tool may cause damage to the cage. If done carefully and slowly, installation should be able to be accomplished with no damage or scratches. Screws may be driven directly into the aluminum frame with a firm pressure. Dragon Strand is not responsible for slipping and damage to the wall panel. If you have any doubt as to your ability to accomplish this then create pilot holes through only the first layer of the frame using a drill bit smaller than the screw. Contact Dragon Strand with any questions regarding installation. *For additional help email: [dragonstrand@gmail.com](mailto:dragonstrand@gmail.com)*



1. Position your first Back Brace in the desired location on the **outside** of the screen panel. (Panel label stickers are all on the inside)
2. You may use masking tape to hold the Back Braces in place. In this step you can move them around until you are happy with their location and then tape them down. The Back Brace does not weigh much so standard masking tape is all that is needed
3. Once you are happy with placement, use a Phillips head screwdriver, pen, or any other small object to open a hole in the tape for the Back Brace mounting hardware.
4. Insert a short screw into the hole as much in the center of the mounting hole as possible. Press firmly on the short screw and slowly twist it into the aluminum frame of the cage. Make sure you are stable and do not slip.
5. Fasten the screw in a couple of turns to firmly lodge it and then carefully remove the masking tape (if used) from around the screw and Back Brace.



6. Continue to twist the screw in until it is tight. **Do not over tighten the screw as you will strip the aluminum framing.**
7. Fasten in the second mounting screw using the same method of starting the screw as with the first one.



8. Repeat steps 3 through 7 for the other side
9. Slip in the Spacer between the Back Brace and the screen. Hold it in place by dropping three long screws into the Back Brace mid-holes and aligning the Spacer so the screws go into the three pre-drilled holes along the length of the Spacer.
10. Carefully push the tip of first long screw to barely poke through the screen or clear PVC.
11. Bring the Ledge from the **inside** and sandwich the screen (or clear PVC) between the Spacer on the outside. Align the screw tip with the pre-drilled hole in the Ledge footing. Fasten half way.
12. Repeat steps 10 and 11 with the other two long screws and then fully tighten all screws.
13. Your Dragon Ledge is installed. Repeat for your other Dragon Ledges!

