



Assembly Instructions: Tall Hybrid Cage System



2*Hydration Mount: For mounting industry standard mist heads and a 1/4" tubing input for plant drip system.

Solid side & Back Panels: Provides humidity retention, visual isolation, protects house walls from mist over-spray, and offers a strong base for mounting plants.

6 * Dragon Ledges: Anchors for mounting horizontal branches and potted plants.

Acrylic Door: Provides superior viewing and humidity retention.

Flip-up Service Door: Convenient access to clean cage floor and chimney effect ventilation.

Cage Floor Option: Solid for resting potted plants or screen for maximum drainage.

Fitted Drainage Tray: To catch and hold waste water away from cage inhabitants.

The Dragon Strand Tall Hybrid Cage System includes features needed by keepers of chameleons and other arboreal species. The Dragon Ledges allow you to easily create a floating garden style interior while the true drainage tray maintains a hygienic environment by keeping water away from droppings and escaped feeder insects. If you have any questions while assembling this cage please reference the product page for links to detailed instructions, email bill@dragonstrand.com, or call (714) 788-3617.

Tools Needed for Assembly:

- Phillips Head Screwdriver
- Scissors (to unwrap parts)
- Bowl (to hold screws)

Optional:

WD-40 or Goo Gone (to remove stickers)

Caution 1: Do not over-tighten screws! Tighten the screw until it is fully seated in the frame and stop turning when the screw is tight. Forcing the screw beyond this point will strip the hole.

Caution 2: Beware of slipping with the screwdriver and punching a hole in the screen or scratching the acrylic. Tighten the screws firmly and deliberately, but do not rush yourself or press harder than necessary.

Success Hint: Open a screw bag only when it is required and store screws in a bowl.

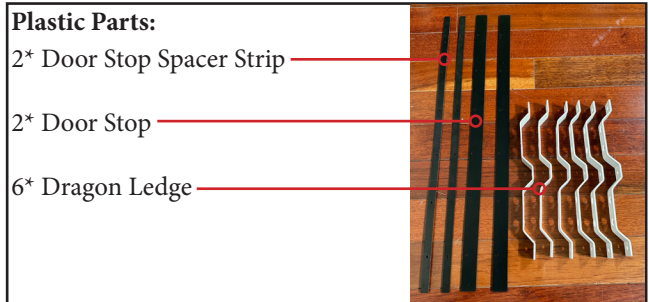
Step 1: Unpack and Verify Contents

Carefully unpack the box and find each item. If there is anything missing or if there is shipping damage please contact me at bill@dragonstrand.com.

Cage Frames:	Type
(A) Left Panel	PVC
(B) Back Panel	PVC
(C) Right Panel	PVC
(D) Bottom Frame	None
(E) Top Panel	Screen
(G) Service Door	Screen
(G2) Upper Front	Acrylic
(H) Main Door Frame	Acrylic
(I) Screen Floor	Screen
	PVC Floor



Drainage Tray



Plastic Parts:

2* Door Stop Spacer Strip

2* Door Stop

6* Dragon Ledge

Hardware Packs:

- Labelled Bags:
- Doorstop Screws
- Cage Assembly Screws



Hinge Bag:
2* Hinges
8* 1/4" #8 Screws



Ledges Mounting Hardware
18* Machine Screws
18* Caps



Hydration Mounts Bag
2* Hydration Mount
2* Grommet
6* 1/2" Screws



Latches/Keepers Bag:
4* Latches
4* Keepers
16* 3/8" #8 Screws

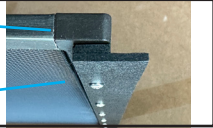


Fogger Bag:
1* Fogger
2* 1/2" #8 Screws

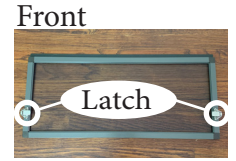
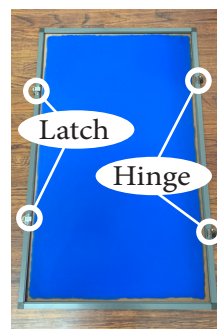
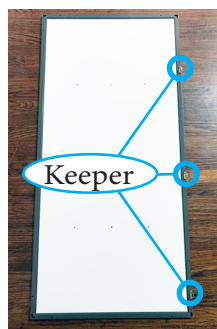
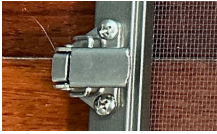
Step 2: Install Doorstops, Latches, Keepers, and Hinges

All latches, keepers, and hinges are mounted on the outside of the panels in pre-drilled holes.

Service Door (G) & Upper Front Panel (G2) Both of these panels will have a door stop for the door to rest against. Find the six holes along the long side. Lay the Door Stop Spacer across them and the Door Stop on top of the spacer. Screw down with screws in "Doorstop Screws" bag



Latch Keeper Left Panel (A) Right Panel (C) Main Door (H) Service Door (G)



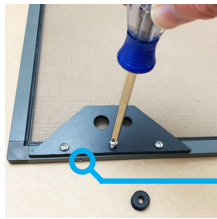
Hinge



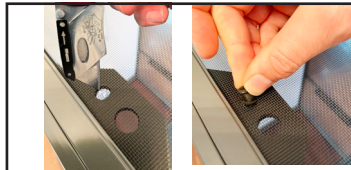
Screws for latches/keepers and hinges are in the latches/keepers and hinges bags. Use only half the hinge screws for this step

Step 3: Install Hydration Mounts and Fogger input

The two Hydration Mounts may be mounted anywhere along the inside of the (E) Top Panel. The grommet is used to allow a 1/4" drip system tubing. The larger hole is for Mist King value mist heads (not included). Install mist heads after the cage is together. Both mist heads and grommet may be installed anytime in the future. **Ensure that the mount screws will not interfere with the predrilled holes for cage assembly.** The Fogger input can be installed anywhere along the outside of the (E) Top Panel

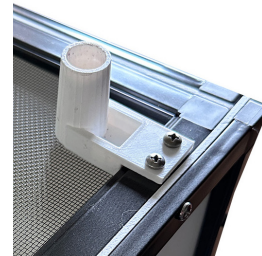


If installed, remove grommet before attaching Hydration Mount. Place Hydration Mount and screw in with 1/2" Screws. Place so the edge of the mount is flush with the frame edge. **Do not interfere with Cage Assembly Screws!**



To Install Grommet: Cut "X" pattern in screen from top.
Insert Grommet. Squeeze grommet to push it through.

Note: If you are not going to use the grommet input then you may skip these two steps. You can install the grommet at any time in the future you choose.



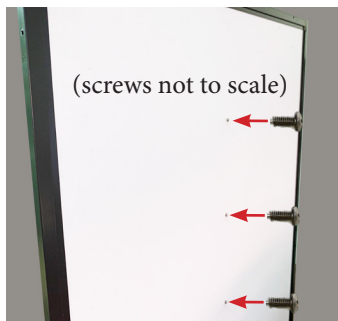
Use the two fogger screws to mount the fogger input anywhere you desire on the top panel.

Step 4: Install Dragon Ledges

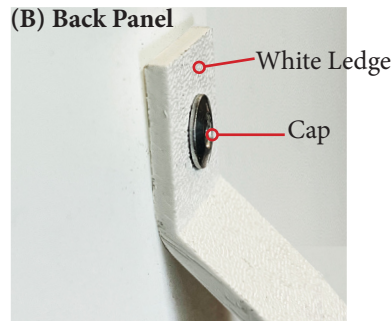
Use White plastic Dragon Ledge pieces and "Ledges Mounting Hardware" bag. Dragon Ledges are mounted on the INSIDE (PVC side) of the back and side panels. Back panel (B) has pre-drilled holes for two vertically orientated Dragon Ledges while both the side panels (A) and (C) have pre-drilled holes for two horizontal Dragon Ledges each. The inside of the panel is the side with the PVC. Latch hardware will be on the outside of the panel. Please double check before installing Dragon Ledges!

Installing Back Panel Dragon Ledges

Completed Back Panel Assembly



Push a Machine Screw from outside of Back Panel (B) to inside (PVC side).

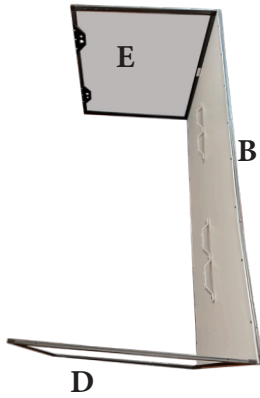


Place White Ledge across screw end and tighten down with one Cap per screw end. Twist cap and screw together tightly. Repeat until both Ledges have three screws each,



Repeat for side panels (A) & (C). Ledges on side panels are horizontal.

Step 5: Construct Cage



1) Construct cage core with Back Panel (B), Top Panel (E), and Bottom Frame (D). Use two Cage Assembly screws each. Bottom Frame sticker is on outside. Other panels are installed with stickers on inside.



2) Add Side Panel Assemblies (A) and (C) with eight Cage Assembly screws each. Attach to Top Panel (E) first to avoid slipping and possible screen damage to Top Panel.



3) Install the Upper Front panel (G2) with six Cage Assembly screws.

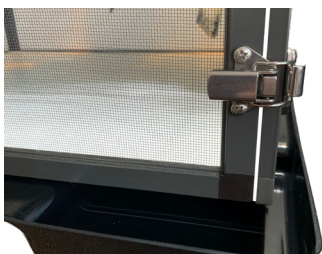
4) Install the Service Door (G) with two Cage Assembly screws **from the sides**. Latching the latches can hold the panel in place.
5) Attach Main Door (H) when you are done setting up the inside to avoid scratches. Latch door in place and use remaining hinge screws.



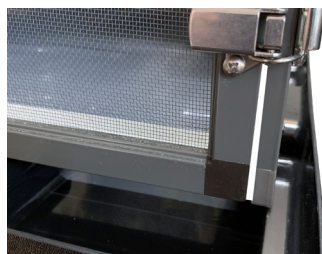
Drainage Tray Your cage sits on top of this tray. With the cage floor in, there is a physical separation between your reptile and the waste water. You can remove the gathered water via a wet/dry vacuum, turkey baster, and/or evaporation. To access the water use a crevice tool and insert it in the space to the side of the cage.

Floor Selection The white PVC floor is used when you plan on resting potted plants on the floor. You may drill drainage holes to facilitate quicker drainage if desired. The screen floor is for builds which have all plants on the sides with the Dragon Ledges. Keep the other floor around to have a temporary floor during the time you remove the main floor for cleaning. The longer side of the floor panel goes towards the back.

Dragon Ledges can be used to their full potential by installing a strong branch support structure. From there, horizontal perching branches and pots for plants can be mounted. In this example, the branches and pots have been attached using zip ties. I use the double pot method where one pot has holes drilled in it to allow zip ties to attach it to a support branch and then an identical pot with the planted plant will be slipped into the mounted pot. **WARNING:** do **not** force the zip tie connection and pull tight. The Dragon Ledges are **very** strong and can pull the cage walls together which will affect door fit. Loosen zip ties if door does not close cleanly.



Included PVC solid floor option. This provides support for potted plants. Small drainage holes may be drilled if more drainage is desired.



Included Screen floor option. This provides maximum drainage and can be used with plants installed along the side panels with the Dragon Ledges.



If you have any questions this assembly guide does not answer, please email me at bill@dragonstrand.com



Thank you for your support of the Dragon Strand Chameleon Caging Company. This purchase supports my ongoing chameleon educational outreach and keeps them free for the benefit of the entire community. In addition to the caging specific resources at <https://dragonstrand.com>, you may enjoy the free Chameleon Academy at <https://chameleonacademy.com> which offers an extensive look at chameleon husbandry.

There, or on any podcast app, you can also find the **Chameleon Academy Podcast**. By looking this up in your podcast app you can enjoy a free weekly educational chameleon radio show anywhere you go!

